

JEWISH COMMUNITY CENTER OF METROPOLITAN DETROIT

THE BERMAN CENTER FOR THE PERFORMING ARTS

Technical Specifications



**West Bloomfield, Michigan
2/28/2018**

NOTE: Please check with Technical Director about updated technical specifications.

6600 W. Maple Road West Bloomfield, MI 48322 248.661.1900
theberman.org

TABLE OF CONTENTS

GENERAL CONTACT INFORMATION	4
PHYSICAL ADDRESS.....	4
FRONT OF HOUSE	4
SELLING PROMOTIONAL ITEMS	4
THE BERMAN FAQ’S.....	4
MAP & DIRECTIONS	5
TRUCK, BUS & VEHICLE PARKING.....	6
SEATING CHART	6
STAGE SPECIFICATIONS	7
GROUND PLAN OF STAGE AND APRON.....	7
MAIN CURTAIN	8
SOFT GOODS INVENTORY.....	8
RIGGING SPECIFICATIONS.....	8
LINE SET SCHEDULE	9
GENIE LIFT.....	9
ORCHESTRA EQUIPMENT	10
SCENE SHOP, TOOLS, AND SCENERY EQUIPMENT	10
PODIUMS.....	10
FOLDING WORK/PROP/HOSPITALITY TABLES	10
RISERS/PLATFORMS.....	10
STEP UNITS	10
FLATS	10
SCENIC PIECES/DRESSING.....	10
SCENE SHOP.....	11
TOOLS AVAILABLE w/ RENTAL.....	11
HANGING PLOT.....	12
LIGHTING INFORMATION	12
CONSOLE AND ENVIRONMENT	12
EQUIPMENT AND FIXTURES	12
EFFECTS.....	13
DIMMER AND RELAY LOCATIONS.....	13
ETC STAGE.....	13
HOUSE LIGHTS	13

SOUND AND COMMUNICATIONS 13
EFFECTS SPEAKERS 13
FRONT OF HOUSE CONSOLE 14
STAGE MONITORS 14
MICROPHONES 14
COMMUNICATION..... 15
FILM AND VIDEO PROJECTION 15
POWER DISTRIBUTION..... 15
DRESSING ROOM INFORMATION 16
PREFERRED HOTELS 17
MEDICAL: HOSPITALS AND DOCTORS 17

GENERAL CONTACT INFORMATION

STAFF

Senior Director	Elaine (Hendriks) Smith	248.432.5673	esmith@jccdet.org
Technical Director	Eric W. Maher	248.432.5414	emaher@jccdet.org
Front of House Manager	Bryan Spangler	248.432.5711	bspangler@jccdet.org
Logistics Coordinator	Kate Peckham	248.432.5508	kpeckham@jccdet.org

PHYSICAL ADDRESS

The Berman Center for the Performing Arts
Jewish Community Center of Metropolitan Detroit
6600 W. Maple Road
West Bloomfield, MI 48322

THE BERMAN: <http://theberman.org>

THE JCC: www.jccdet.org

FRONT OF HOUSE

The Berman has a fully functional Box Office. Hours are normally: Monday – Friday 10 am – 4 pm, and 2 hours prior to all ticketed events. We manage and sell all tickets from The Berman, using WebTix software. There is a \$3 service charge added to the cost of every ticket sold. There is no additional charge to sell tickets through The Berman Box Office. We provide the Box Office staff, volunteer ushers and coat check (if needed).

SELLING PROMOTIONAL ITEMS

We welcome the selling of your promotional items in our lobby before shows, at intermission and after the shows. The percentage for all marketing sold is 20% to be paid in cash to a Berman representative after each performance. The Berman representative will issue a handwritten receipt.

THE BERMAN FAQ'S

MARKETING PURPOSES: Only refer to The Berman in the following ways (do not use theatre or theater...also, please do not refer to it as The Berman Center)

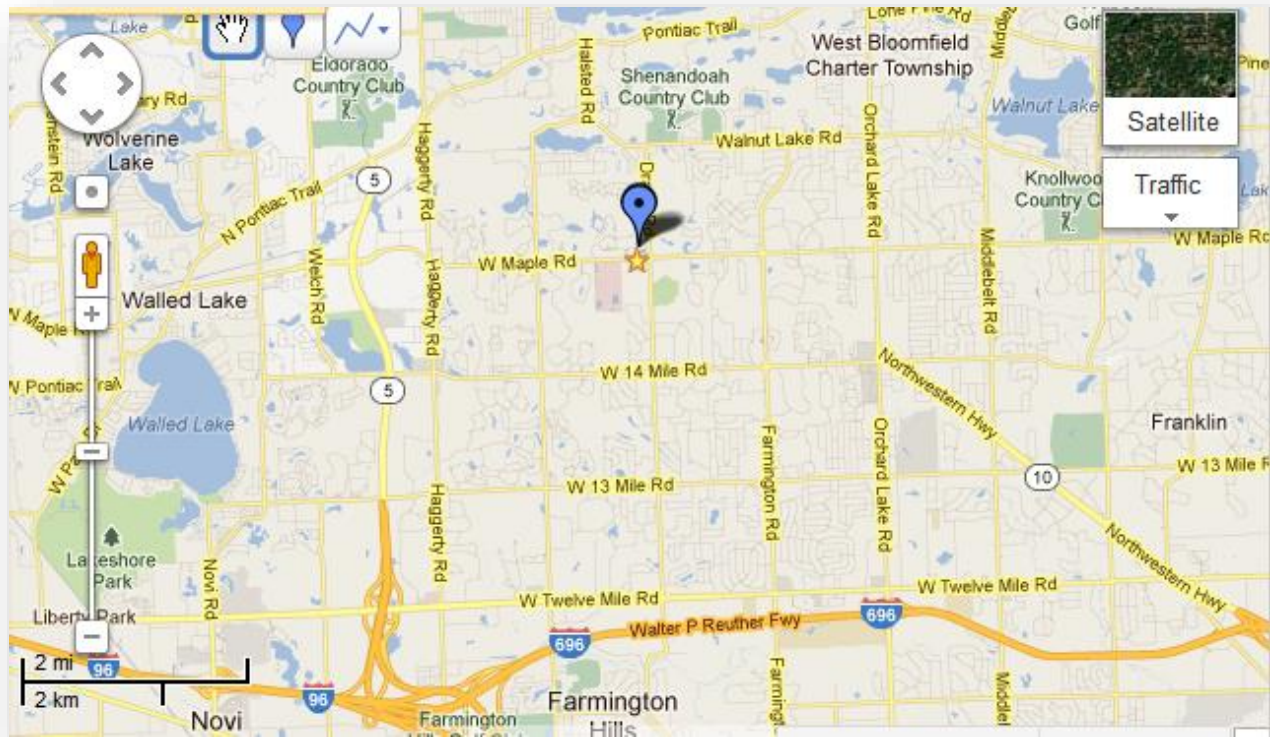
The Berman Center for the Performing Arts
The Berman

The Berman Center for the Performing Arts is a department of and shares a lobby with The Jewish Community Center of Metropolitan Detroit.

- In the lobby there is also
- Handleman Hall (Hours vary)
- Janice Charach Gallery (Art Gallery)
 - Monday – Wednesday: 10 am – 5 pm
 - Thursday: 10 am – 7 pm
 - Sunday: 12 pm – 4 pm

MAP & DIRECTIONS

The Berman Center for the Performing Arts is conveniently located in the Jewish Community Center of Metropolitan Detroit on the corner of Maple and Drake and can be reached by several routes.



From Detroit Metro Airport to Loading Dock:

Follow the signs to exit the airport – Merge on to I-94 W (Chicago). In 3.5 miles, merge on to I-275 N via exit 194 (Flint). In 18.3 miles, take the I-696 exit 165 (Port Huron) and merge onto M-5 N exit on the left. In 4.2 miles turn right on to 14 Mile Road. Take the 2nd left onto Haggerty Road. In 1.7 miles turn right on to Maple Road. The Jewish Community Center will be on your left before the Roundabout on Maple and Drake. Take the Roundabout and exit the 3rd exit (equivalent of turning left) on to Drake. Turn left into the Drake entrance, and go straight past the Berman. The loading dock is in the left side of the building past the 1st Stop sign.

From East Side of Detroit to Loading Dock:

Take I-696 W towards Lansing. Take exit 10 to merge onto M-10 N toward US-24/Telegraph Road. Turn right on to Orchard Lake Road. Turn left to Maple Road. At the traffic circle, continue straight on Maple Road. At the second traffic circle, turn right on to Drake Road. Turn left into the Drake entrance, and go straight past the Berman. The loading dock is in the left side of the building past the 1st Stop sign.

From West Side of Detroit to Loading Dock:

Take M-39 N/Southfield Freeway to M-10 N/Lodge Freeway. Take the Lodge until it ends (it becomes Northwestern). Turn right on Orchard Lake Road. In 1 mile, turn left on to Maple Road. Go straight thru the first roundabout (Farmington Hills) and turn right at the second roundabout (Drake Road). Turn left into the Drake entrance, and go straight past the Berman. The loading dock is in the left side of the building past the 1st Stop sign.

From Downtown Detroit to Loading Dock:

Take M-10 N/Lodge Freeway. Take the Lodge until it ends (it becomes Northwestern). Turn right on Orchard Lake Road. In 1 mile, turn left on to Maple Road. Go straight thru the first roundabout (Farmington Hills) and turn right at the second roundabout (Drake Road). Turn left into the Drake entrance, and go straight past the Berman. The loading dock is in the left side of the building past the 1st Stop sign.

TRUCK, BUS & VEHICLE PARKING

Truck & Bus parking on site needs to be secured prior to arrival. Please inquire with the Technical Director about parking.

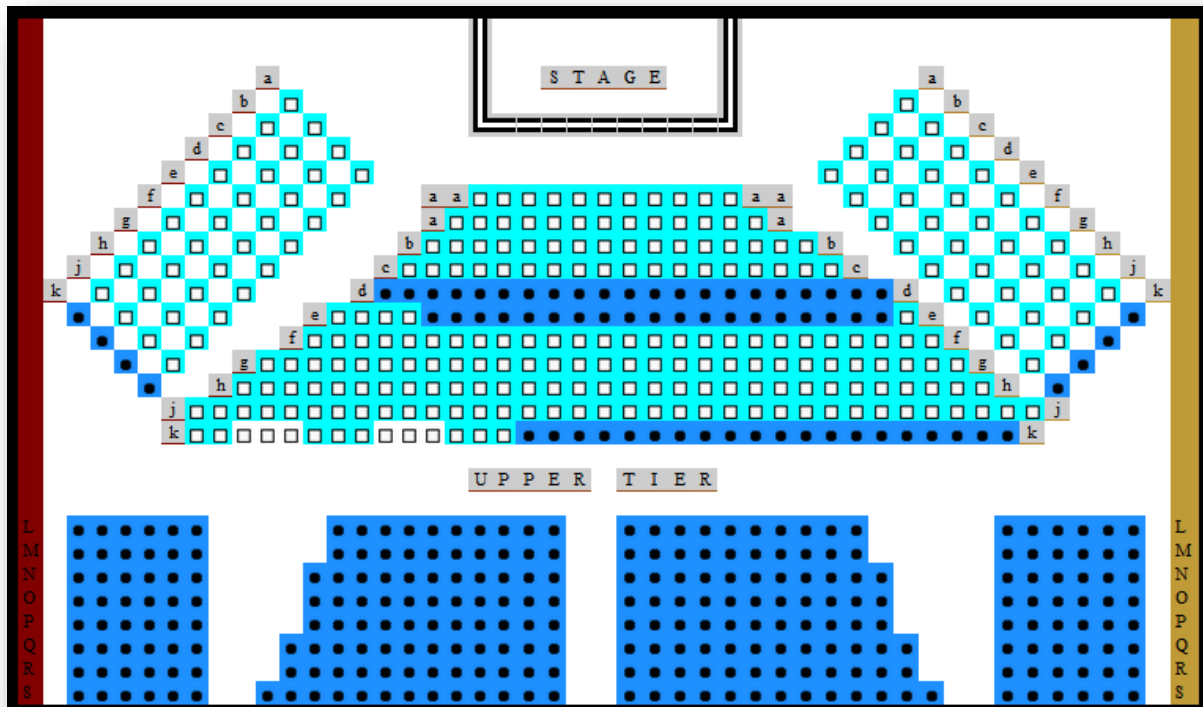
SEATING CHART

The Berman’s has the ability to seat either 350 or 600 people because of the flexibility of collapsible seating and a wall that can close (with ample notice).

Seating 300: Row AA – Row K (Row K is handicapped seating)

Seating 600: Row AA – Row S

Below is a sample of the online ticketing systems seating plan. The stage is nothing like what is pictured below. The furthest seat from the stage is 70 feet total. Row AA is removable for an additional charge to use as an orchestra pit.



STAGE SPECIFICATIONS

Floated Stage Floor is rated for 380 Lbs. per wheel. Any damage to the floor incurred by a production will be repaired and will be at the cost of the production.

HEIGHT OF STRUCTURAL HANGING STEEL – 41' - 4"

HEIGHT OF PROSCENIUM – 18' - 0"

WIDTH OF PROSCENIUM – 41' - 4"

HEIGHT OF GALLERIES

 Loading Gallery – 36' - 8"

 Pin Rail SL – 2' - 6"

 On Deck – 3' - 6"

DEPTH OF STAGE (*From Plaster Line*) – 27' - 0"

WIDTH OF STAGE

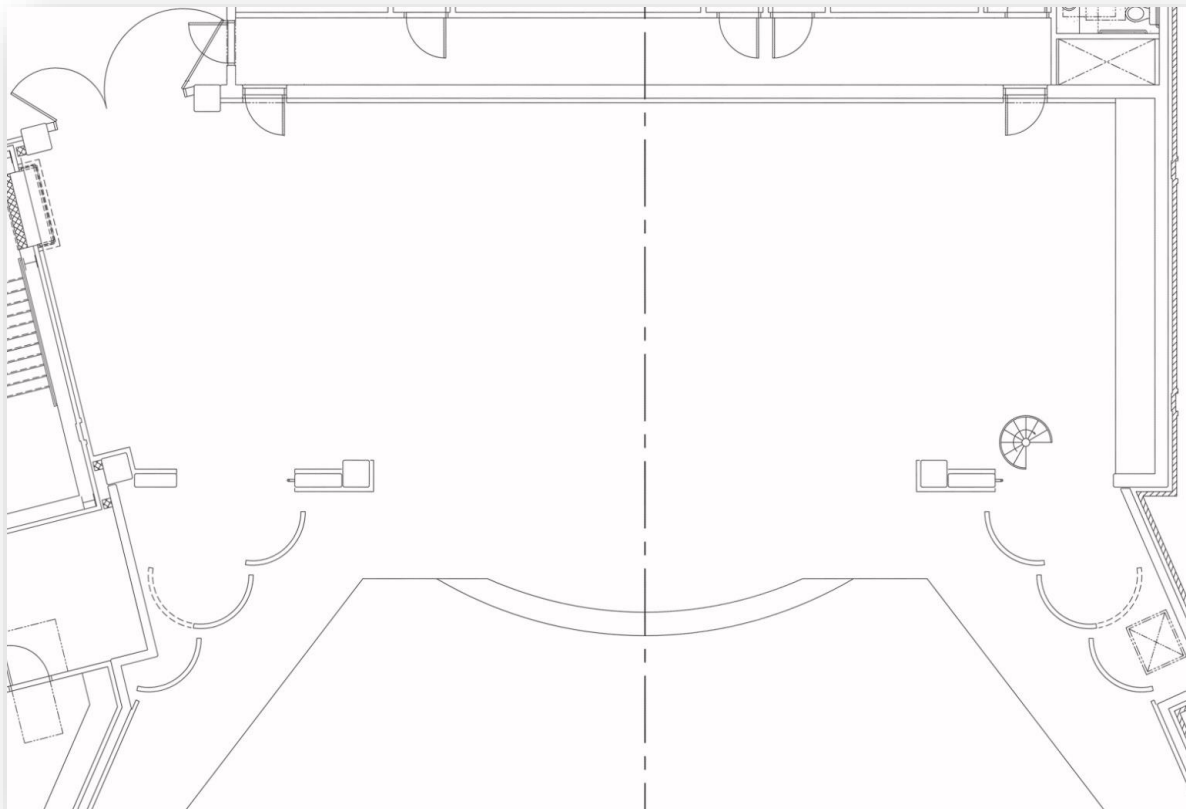
 Width of stage (centerline to SR) 41' - 10" DS & 52' - 10" US

 Width of stage (centerline to SL) 35' - 8"

APRON – 8' - 6" from P.L.

HEIGHT OF STAGE (seating level to stage level) – 3' - 4"

GROUND PLAN OF STAGE AND APRON





MAIN CURTAIN

The main curtain is a manual fly and center split velour curtain located directly above the proscenium. Curtain is operated from stage level down stage left. The main curtain can be flown out or used as a grand valence. It cannot be taken down.

SOFT GOODS INVENTORY

# IN STOCK	SOFT GOOD TYPE	COLOR	FULLNESS	FR	SIZE: WIDTH x HEIGHT
1	Guillotine / Traveller	Orange	50%	Y	46'-2" x 19'-6"
2	Guillotine Legs w/ Clips	Orange	50%	Y	6'-0" x 19'-6"
5	Borders	Black	50%	Y	61'-0" x 6'-0"
8	Legs w/ Clips	Black	50%	Y	10'-0" x 19'-6"
8	Commando Cloth Legs w/ Ties	Black	0%	Y	9'-10" x 24'-0"
4	Commando Cloth Legs w/ Ties	Black	0%	Y	9'-10" x 21'-0"
2	Traveller	Black	50%	Y	32'-0" x 19'-6" (x2)
2	Scrim	Black	0%	Y	50'-0" - 19'-6"
1	Cyclorama	White	0%	Y	50'-0" - 19'-6"

RIGGING SPECIFICATIONS

Single purchase counterweight, hand-operated line sets operated from the deck stage left.

There are 29 lines

- a. (15) Stage masking linesets, 1,200# lineset capacity, each with 600# counterweight
- b. (9) Stage scenery linesets, 1,200# lineset capacity, each with 600# counterweight
- c. (3) Stage lighting linesets, 1,500# lineset capacity, with 1,000# counterweight
- d. (2) Stage projection screen linesets, 1,200# lineset capacity, each with 600# counterweight

GRID HEIGHT - 41' - 4"

TRAVEL DISTANCE - 35' - 6"

LINE SET SCHEDULE

LINE SET	TYPICAL	DISTANCE FROM PROSCENIUM	DISTANCE FROM APRON @ CENTER	# OF LINES	BATTEN LENGTH	NOTES
1	Grand	0'-8"	12'-2"	5	46'-2"	
2	Corporate Screen (S.T.E.A.S.)	1'-4"	12'-10"	7	53'-4"	
3	Portal (Border and Legs)	2'-0"	13'-6"	7	53'-4"	
4	EMPTY	2'-8"	14'-2"	8	53'-4"	20 Dimmers Available
5	1st Electric	3'-4"	14'-10"	7	61'-0"	
6	Border / Black Wall	4'-8"	16'-2"	7	61'-0"	
7	Legs	5'-4"	16'-10"	7	61'-0"	
8	EMPTY	6'-0"	17'-6"	7	61'-0"	
9	EMPTY	8'-0"	19'-6"	7	61'-0"	
10	Border	8'-8"	20'-2"	8	61'-0"	22 Dimmers Available
11	Legs	9'-4"	20'-10"	7	61'-0"	
12	2nd Electric	10'-8"	22'-2"		61'-0"	
13	Border	12'-0"	23'-6"	7	61'-0"	
14	Mid Stage Traveller	12'-8"	24'-2"	7	61'-0"	
15	Legs	13'-4"	24'-10"	7	61'-0"	
16	EMPTY	14'-0"	25'-6"	7	61'-0"	
17	EMPTY	14'-8"	26'-2"	7	61'-0"	
18	EMPTY	15'-4"	26'-10"		61'-0"	
19	4:3 Screen	17'-4"	28'-10"		61'-0"	
20	Border	18'-0"	29'-6"		61'-0"	
21	Legs	18'-8"	30'-2"		61'-0"	
22	EMPTY	19'-4"	30'-10"		61'-0"	
23	3rd Elec	20'-0"	31'-6"	8	50'-0"	10 Dimmers Available
24	EMPTY	20'-8"	32'-2"		50'-0"	
25	Border	21'-4"	32'-10"		50'-0"	
26	Up Stage Traveller	22'-0"	33'-6"	7	50'-0"	
27	Scrim w/ Commando Legs	23'-4"	34'-10"		50'-0"	
28	CYC w/ Velour Legs	24'-0"	35'-6"	7	50'-0"	
29	4th Electric LED Bounce	24'-8"	36'-2"	7	50'-0"	

GENIE LIFT

Genie AWP-30S

ORCHESTRA EQUIPMENT

- 1 Piano – Steinway B Concert Grand – Black
Note: Piano's tuned only by designated House Tuner. Cost for tuning will be an additional fee (see fee page).
- 1 Manhasset Conductor Stand
- 3 Manhasset Music Stands
- 15 Fully Adjustable Music Stands
- 6 15 LED Super Bright battery (Rechargeable) operated music stand lights
- 3 36" Espresso wood grain Stools
- 1 27" Espresso wood grain Padded with Back Stool
- 5 24" Espresso wood grain Stools

SCENE SHOP, TOOLS, AND SCENERY EQUIPMENT

PODIUMS

- 1 Black rolling Podium with locks.
- 1 Wood Grained rolling Podium with locks.
- 2 JCC Dark Espresso Podiums

FOLDING WORK/PROP/HOSPITALITY TABLES

- 8 6' x 16"
- 2 5' x 16"

RISERS/PLATFORMS

- 7 4'x8' Platforms

STEP UNITS

- 2 3'w x 8'd x 48"h Step Units (6"Rise x 12"Run)
- 2 2'-6"w x 5-d x 48"h Step Units w/ Railing (8"Rise x 10"Run)
- 1 1'x 8' Platform Step
- 2 1'x 4' Platform Step

FLATS

- 2 2'w x 2'd x 17'h Corner Wraps for Proscenium. On Wheeled 'L' Platform (6"Rise x 12"Run)
- 2 18"w x 18"d x 12'h Two Sided Columns

SCENIC PIECES/DRESSING

- 8 18"w x 18"d x 18"h Stackable Rehearsal Cubes
- 8 16'h x 18 to 24"w Tree Trunk Drops
- 3-4 5-6'h Ficus (Fake)
- 2 4-5'h Vase w/ Flowers (Fake)
- 2 Bar Height Café Rounds Chrome
- 1 Black Vinyl (Leather Looking) Two Person Couch
- 2 Yellow and Gold Plush Chairs
- 2-4 Light wood Padded armed meeting/panel chairs

Also Available Various Black Table Linens

SCENE SHOP

Our Scene Shop is connected directly to the backstage right of the theatre with a large 10' x 19' steel door. The shop is accessible via our loading dock with two truck bays. The loading dock is 43" high and has 2 manual 7'-9"w x 8'-6"h garage doors. The loading dock connects to the scene shop through two 8'w x 10'h garage doors. It is fully outfitted with Delta Table Saw, Jet Band Saw, Delta Belt and Disc Sanders, Router Table w/ Dewalt AC Router, Dewalt 12" Compound Sliding Mitre Saw, Delta Scrolling Saw, Air Compressor, and audio monitor from stage.



TOOLS AVAILABLE w/ RENTAL

- | | | | |
|---|--|--------------|---|
| 2 | Dewalt 18v Impact Driver | 2 | Bostich ¾" – 2½" Pneumatic Narrow Crown Stapler |
| 2 | Dewalt 18v Drill Driver | 2 | Bostich ½" – 1½" Pneumatic 18g Brad Nailer |
| 1 | Dewalt 18v Hammer Drill Driver | 1 | Pneumatic Impact Ratchet |
| 1 | Dewalt AC Hammer Drill Driver | 1 | Ratchet Set |
| 2 | Dewalt AC Palm Sander | 4 | 25' ¼" Pneumatic Hose |
| 1 | Dewalt AC 7¼" Circular Saw | 3-4 of each: | |
| 1 | Dewalt AC Jig/Scroll Saw | | Hammer |
| 1 | Dewalt 18v 6½" Circular Saw | | Rubber Mallet |
| 1 | Dewalt 18v Reciprocating Saws-all | | Tape Measure |
| 1 | Porter Cable AC Router | | Pliers and Wrenches |
| 2 | Dewalt 2½" – 3½" Pneumatic Construction Nailer | | Quick Square |
| 2 | Dewalt 1" – 1½" Pneumatic 15g Finish Nailer | | Carpenter Square |
| | | | Chalk Line |

HANGING PLOT

Please contact the Technical Director for a copy of the current hanging plot if it is available, he will forward it.

LIGHTING INFORMATION

CONSOLE AND ENVIRONMENT

ETC Ion Console
2 DMX Universes
159 ETC 2.4k Model D20 Dimmers
24 20A Relays

EQUIPMENT AND FIXTURES

Instruments Available for Re-hang/Refocus (x161)

ETC Source 4 575w Ellipsoidal –

10° (x4 Lens Tube)

19° (x31)

26° (x23)

36° (x25)

50° (x6)

Source 4 575w Par w/ W, M, N, VN Lenses (x28)

Altman 500w Fresnel (x13)

Chauvet Rechargeable DMX LED Pucks (x8)

ELATION ELAR 108 36x3w LED wash fixture EAR493 15° (x16)

Each w/ ELATION LSF30 Beam Shaping Filter 30°

LED ETC Sealdor Vivid 11 (x16)

Each w/ ETC SELLHXX-11 LENS H20°, H30°, H40°, H60°, H80°

Each w/ ETC SELLVXX-11 LENS V30°

ELATION PLATINUM 15R PRO Moving Fixture (x11 Units)

Additional Instruments and Equipment:

ROBERT JULIAT 1124CD BUXIE FOLLOW SPOTS (x2) in front of house tower positions

(5 color + N/C Gel Drops) – MSD575 Lamp

10ft Booms Pipes w/ 50lb. bases available (x8)

City Theatrical Safer Sidearm model #210 (x20)

DMX (5-pin) Cable:

10' (x4)

25' (x30)

50' (x2)

Stage Pin Cable:

2-Fer, Molded, Stage Pin 2P&G, 20 Amp (x20)

5' (x10)

10' (x36)

15' (x5)

20' (x5)

25' (x12)

50' (x14)

EFFECTS

Ultratec CLF 2460 RADIANCE HAZER (x2)
Ultratec G3000 FOG EFFECTS GENERATOR (x1)

DIMMER AND RELAY LOCATIONS

ETC STAGE

USR Floor Pocket	D149 through D151	R22(x2)
USL Floor Pocket	D152 through D154	R22(x2)
3 Electric	D116 through D125	R16(x6), R17(x6), R18(x2)
SR Drop Box	D126 through D129	
SL Drop Box	D130 through D133	
2 Electric	D96 through D115	R14(x2), R15(x2)
SR Floor Pocket	D146 through D148	R21(x2)
SL Floor Pocket	D155 through D157	R21(x2)
1 Electric	D76 through D95	R12(x2), R13(x2)
SR Torm	D70 through D74	R11(x2)
SL Torm	D64 through D68	R10(x2)
Stage Front (Pit) SR	D158 through D159	R23(x2)
Stage Front (Pit) SL	D160 through D161	R24(x2)
1 Catwalk	D31 through D63	R5(x2), R6(x2), R7(x2), R8(x2)
2 Catwalk	D1 through D30	R1(x2), R2(x2), R3(x2), R4(x2)
3 Catwalk	D134 through D145	R19(x2)

HOUSE LIGHTS

Lower Seats (338)	D182 through D184
Center Aisle (Diazoma)	D181
Upper Seats (280)	D177 through D180

SOUND AND COMMUNICATIONS

The audio system is comprised of a stereo room PA with a series of delay cabinets for the expanded seating area at the back of the room. The room has a pair of flown subwoofers for LF support.

The main speakers are Renkus Heinz ST4R powered 3- way speakers. The room is configured with 2 speakers per side flown left and right of the proscenium opening. The speakers have a frequency range of 50Hz to 18kHz and a max SPL of 130 dB. The subwoofer system is comprised of 2 – Danley TH115 subwoofers with a Crown CTS3000 amplifier. The Danley Subs have a frequency range of 33 Hz to 280 Hz and a max SPL of 139 dB. The system is preconfigured and tuned by the audio consultant to provide a rounded performance system designed to meet the needs of a variety of programming content.

EFFECTS SPEAKERS

Tie Line (Connection) points are located throughout the facility for additional set-ups and effect speaker locations.

FRONT OF HOUSE CONSOLE

Yamaha M7CL-48ES.

w/ 8 local Omni inputs

w/ 8 local Omni outputs

STAGE MONITORS

4 – Renkus Heinz CFX121M

2 – JBL JBX100

2 – JBL - 12" Two-Way Self Powered - PRX612M

2 – JBL - 15" Two-Way Self Powered - PRX615M

4 – Channels of Crown amplification

1 – Remote (Un-racked) QSC 2 Channel Amplifier

Powers: 2 – JBL – 15" (used as Apron Side Fill)

MICROPHONES

Vocal

12 Channels of Shure ULXD

3 Shure ULXDQ Quad Channel Receiver System

12 Shure ULXD2/58 Handhelds

12 Shure ULXD1 Body Packs

2 Shure UA870USTV Shark Fin Paddle Antenna

2 Acoustic Pickup ¼" to SHURE Wireless Conversion Cables

7 COUNTRYMEN e6 Omni-directional ear-set

2 Sennheiser MKE2

3 SHURE 58

2 SHURE Beta 58a

2 SHURE 87a

Choir/Area

3 Crown PCC-160

2 Audio Technica U853RU

1 AKG HM1000 w/ CK80 capsule

Instrument

2 AKG Stereo Matched C414

3 SHURE SM57

2 SHURE SM 81

2 SHURE PG 81

3 SENNHEISER e604

1 SHURE Beta 52a

1 AKG D112

Instrument Support

6 Behringer DI100 Ultra-DI Direct Box

2 ProCo CB-1 D.I. Boxes

3 Misc D.I. Boxes

COMMUNICATION

Wired 2 Channel Clear Com System

Locations: SR, SL, Dressing Rooms, FOH, Catwalks, Spotlight Positions, Control Booth.

Five Motorola walkies with designated wireless channel. (Headsets available.)

FILM AND VIDEO PROJECTION

Video and Presentation Fixed Position (additional rental cost)

SANYO PDG-DHT 8000 Lumen

Utilizes available projection screens:

Full, Motorized Roll Down Projection Screen on the Apron of Stage.

White Cyclorama

Framed 9'x 12' Shop Built Screen

Media Projection Equipment

2 Samsung Bluray

Extron 60-1012-01 MPS 409 Media Presentation Switcher

Extron 60-1059-01 DVS-605 Five Input HDCP-Compliant Scaler and Switcher

Re-Positionable Theatrical (additional rental cost)

EPSON PowerLite 4000 Lumen Scenic Projector

Projectable Media:

MS Power Point or Video/Media Player

Desk Top Computer (i.e. downloaded source/internet)

Blue Ray

DVD

Client provided sources that send through an HDMI or VGA Output

Client provided Mac with appropriate video adaptors to HDMI or VGA Output

Live Video Capture and Presentation (additional rental cost)

- 2 JVC GY-HM650U PRO HD CAMERA WITH FUJINON 23X LENS
DUAL SDXC/SDHC CARD RECORDING FOR .MOV, .MP4, AVCHD. HD/SD-SDI AND HDMI OUTPUTS.
BUILT-IN FTP AND WIFI CONNECTIVITY
- 2 Professional Camera Tripods with Shop built rolling bases.
- 1 SONY EVIH100S SONY EVIH100S PTZ CAMERA WITH 20X OPTICAL ZOOM
- 1 EXTRON MGP 464 PRO 3G-SDI 4 WINDOW PROCESSOR

Supported by a video presentation wall for live feed to Sanyo Projector

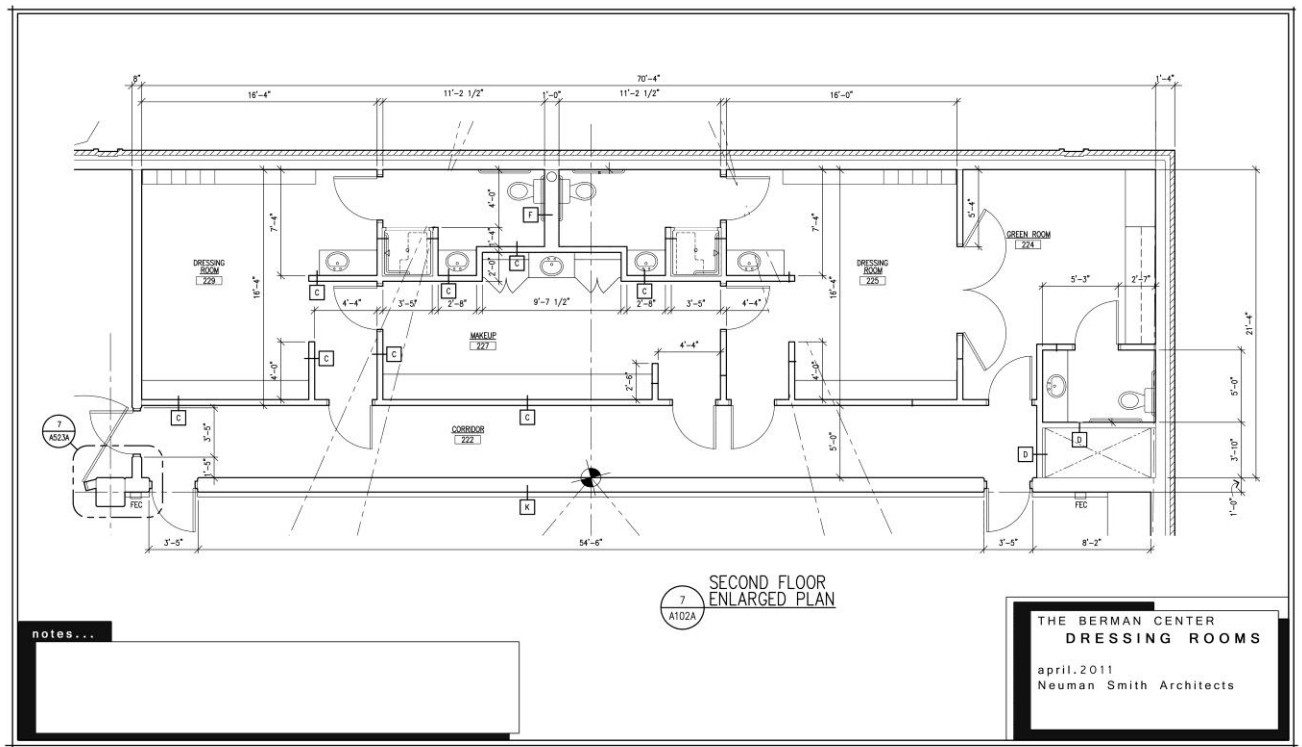
POWER DISTRIBUTION

Power is located throughout the theatre on stage and floor pockets. This power has separated ground wire for audio purposes.

Located Upstage Right is our 100amp 120/280 VAC 3PH, 4W, 60HZ Company Switch (Not separated ground, use for equipment and lighting only.)

DRESSING ROOM INFORMATION

The dressing rooms at The Berman are located US of the back wall of the theatre. The hallway to the dressing rooms is a cross over, eliminating the need for a cross over on the stage itself. Each room has its own flat screen monitor of the stage and independent sound monitors. The backstage area has a public internet connection that requires no password.



DRESSING ROOM A

Located upstage right, dressing room A has a door to the crossover hallway and to the makeup room both which are lockable. It is equipped with a full bathroom suite (including a shower), a coffee pot, hot water pot, microwave, refrigerator, and ample counter space for up to 5 people, a make-up sink, and one mirrored wall. It has small lockers that are available for storing goods for the day – artists are welcome to bring a locker lock which must be removed at the end of the evening.

MAKE UP/WARDROBE ROOM

Located upstage center, the makeup room is between Dressing Room A and B, and has direct access to both dressing rooms along with direct access to the crossover hallway. It is equipped with mirrors and seating for up to 7.

The Berman has does not have wardrobe capabilities, including: combination washer/dryer, sidekick delicates washer, steamer, iron, ironing board, light sewing kit and small sewing machine.

DRESSING ROOM B

Located upstage left (2nd door), dressing room B has a door to the crossover hallway, green room, and to the makeup room both which are lockable. It is equipped with a full bathroom suite (including a shower), a coffee

pot, hot water pot, microwave, and ample counter space for up to 5 people, a make-up sink, and one mirrored wall. It has small lockers that are available for storing goods for the day – artists are welcome to bring a locker lock which must be removed at the end of the evening.

GREEN ROOM

Located upstage left (1st door), the green room is for use by the stage crew as well as production staff of the performance. It has direct access to dressing room A as well as the crossover hallway and is equipped with a microwave, coffee pot, hot water pot, refrigerator and a bathroom with a sink and mirrors. It has a closet for hanging coats as well as comfortable seating.

PREFERRED HOTELS

<u>Courtyard by Marriott</u> 31525 West 12 Mile Road Farmington Hills, Mi 48344 248.553.0000	<u>Baronette Renaissance</u> 27790 Novi Road Novi, MI 48377 248.349.9009	<u>Townsend Hotel</u> 100 Townsend Street Birmingham, MI 48009 (248) 642-7900
---	---	--

MEDICAL: HOSPITALS AND DOCTORS

Across the street from the Jewish Community Center (across Maple Road) is [Henry Ford West Bloomfield Hospital](#). They can refer you to anything you might need and have an emergency room.

6777 W. Maple Road
West Bloomfield, MI 48322
(248) 325-1000

Parking

All self-parking at Henry Ford West Bloomfield Hospital is free. Self parking areas are available near the Main entrance and at the Josephine Ford Cancer Center entrance. Wheelchairs are available at all entrances. Handicapped-designated parking spaces are located in front of the Main entrance, the Josephine Ford Cancer Center entrance and the Emergency entrance.

Valet Services

Valet parking is available at both the Main entrance and Emergency entrance. If you choose to use our Valet Services, located at the Main entrance, there is a \$4.00 charge. There is no charge for Valet Services at the Emergency entrance for ER patients.

Henry Ford Pharmacy Services

7:00 am - 7:00 pm (M-F)
8:00 am - 4:00 pm (Sat)
10:00 am - 3:00 pm (Sun)
Pharmacy Phone: (248) 325-3820